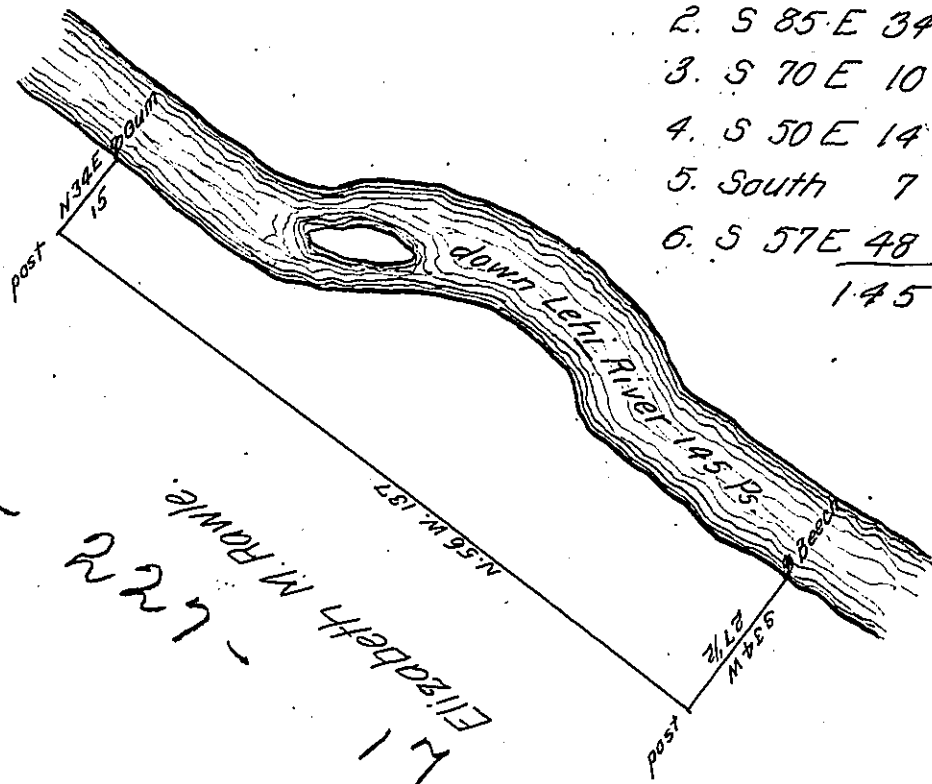


The bearing & distance
down Lehi—are

- 1. S 56 E 32
 - 2. S 85 E 34
 - 3. S 70 E 10
 - 4. S 50 E 14
 - 5. South 7
 - 6. S 57 E 48
- 145

C-217-84



C-217-84
Elizabeth M. Rowie
17

By Virtue of a Warrant dated the 17th March 1786. Surveyed the 28th
 July 1794 to John Verner the above described tract of land situate about
 a quarter of a mile below the Mouth of Mahoning creek in Penn Township
 Northampton County Containing nineteen acres three quarters and the
 Allowance of Six P Cent & C^o

To Daniel Bradhead Esquire

P^o Geo. Palmer D.S.

Surveyor General.

IN TESTIMONY that the above is a copy of the original remaining on file in
 the Department of Internal Affairs of Pennsylvania, made
 conformably to an Act of Assembly approved the 16th day of
 February, 1833, I have hereunto set my Hand and caused
 the Seal of said Department to be affixed at Harrisburg,
 this Eighteenth day of April 1907

Isaac S. Brown
 Secretary of Internal Affairs